

1. Place a Secure Slip™ chamber onto a work surface as shown in Figure 1.

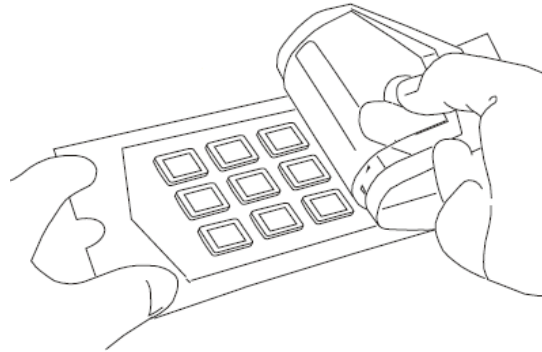


Figure 1

2. Aseptically peel the back sterile pouch with top plastic liner to expose SecureSlips (Figure 2).

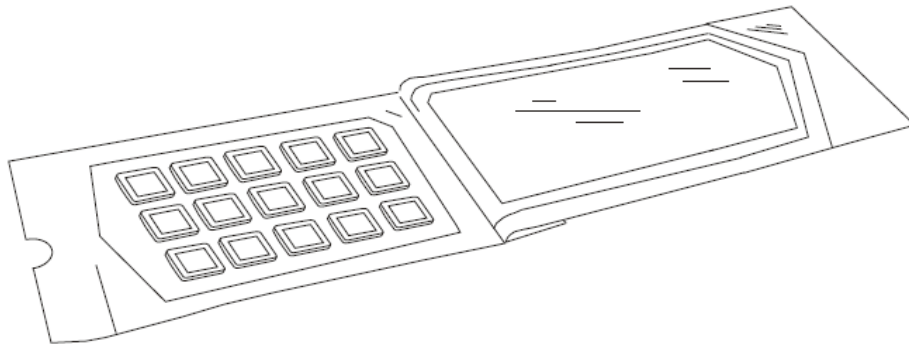


Figure 2

3. Using sterile forceps, lift individual SecureSlips by the silicone backing as shown in Figure 3. Lift *slowly*, allowing time for silicone to release. Pull at an angle close to the plastic carrier.

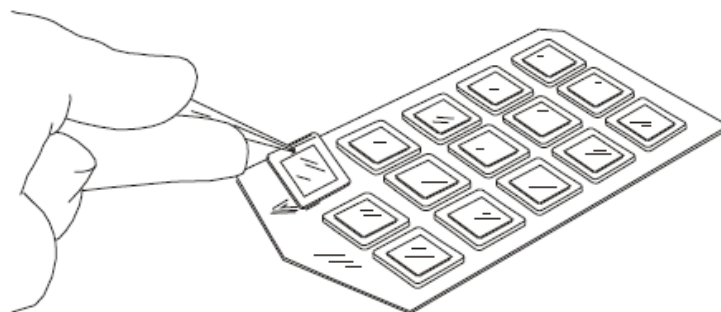


Figure 3

4. Place SecureSlips into sterile CultureWell plates or culture dishes as shown in Figure 4.

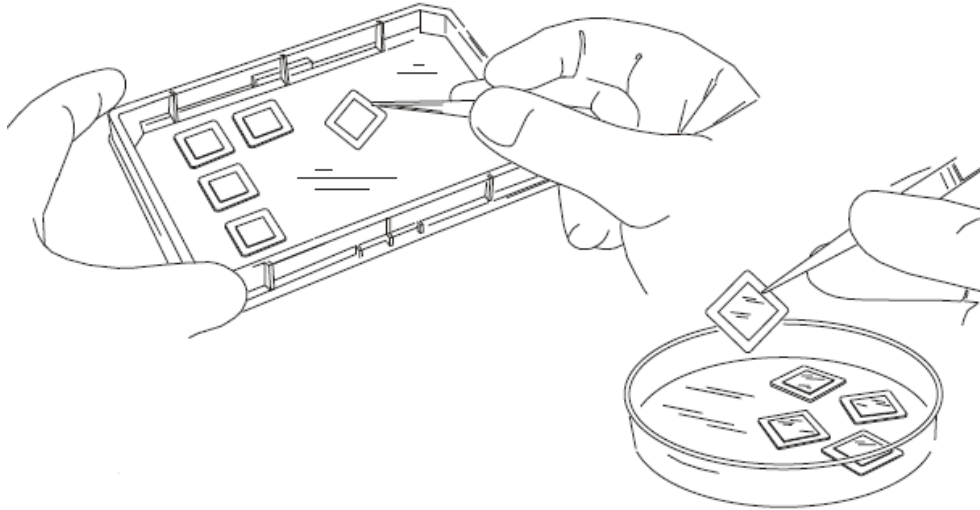


Figure 4

5. To culture cells on SecureSlip glass coverslips, flood the plate with a suspension of cells in medium as shown in Figure 5. Allow the cells to attach for 1-24 hours in a humidified CO₂ incubator.

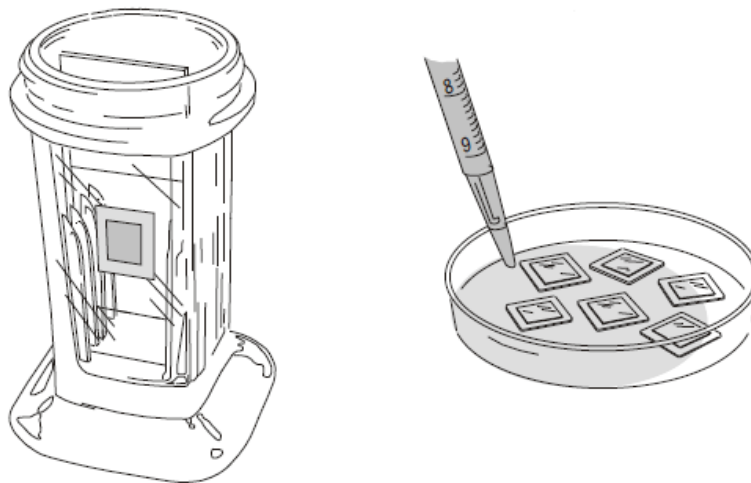


Figure 5

After cultivation, cells can be washed, fixed and stained in the plate using standard protocols. The hydrophobic silicone creates a fluid barrier to facilitate antibody incubations on coverslips.

6. To remove a SecureSlip from a plate, grasp the silicone backing with a forceps and pull *slowly* upward releasing the silicone backing from the plate surface.
7. Coverslips can be affixed to a slide by means of the tacky silicone backing for routine processing of slides. The silicone backing can also be used to create a water barrier for probe incubations under the coverslip inverted and mounted on a slide as shown in Figure 6.

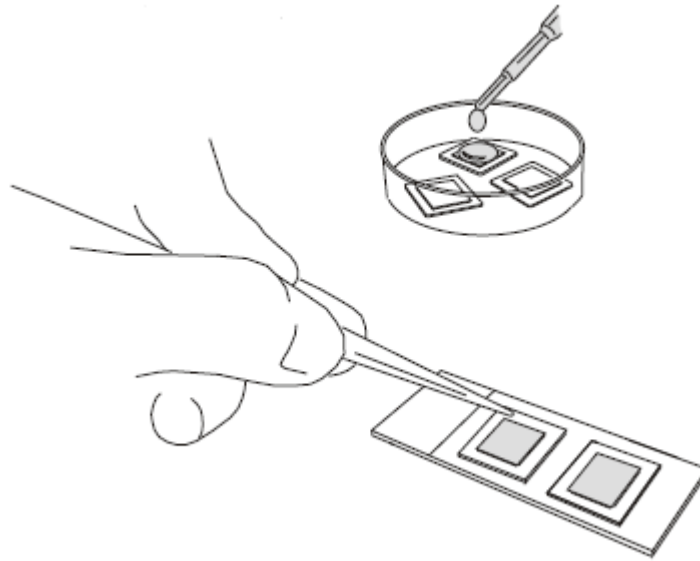


Figure 6

8. The silicone backing can also be easily removed by peeling it away from the coverslip for routine slide mounting as shown in Figure 7.

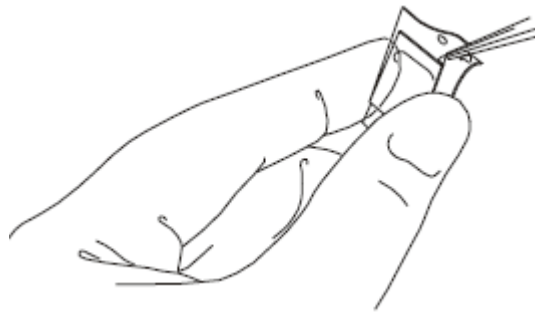


Figure 7

SecureSlips™ are for laboratory use only.